



19700 Janelia Farm Blvd
Ashburn, VA 20147
703-726-5500

February 12, 2009

Mr. Ed Davison
U. S. Department of Commerce
1401 Constitution Avenue N.W.
Washington DC 20230

RE: Notification of the Blue Creek Wind Project in Allen County Indiana, Paulding County Ohio, and Van Wert Count Ohio.

Dear Mr. Davison:

This letter and its attachments will serve as notification to the government that Iberdrola Renewables plans to install a Wind Energy Facility in Allen County, Ohio. The installation will be called Blue Creek Wind Project.

Enclosed are maps and tables that describe the location of the project.

- Table 1 is a list of the coordinates of the project boundaries.
- Figure 1 is a map of the general area showing the outline of the wind energy project boundaries in Ohio.
- Figure 2 is a local map of the wind energy facility boundaries.

The approximate dimensions of the Wind turbines to be installed at this facility are:

- Turbine Hub Heights AGL: 78 meters
- Turbine Blade Diameter: 80 meters
- Blade Tip Height AGL: 118 meters

If you have any questions with regard to this notification, please call Kurt Oliver at (703) 726-5675 or me at (703) 726-5860.

Sincerely,
COMSEARCH

A handwritten signature in black ink, appearing to read "Lester E. Polisky".

Lester E. Polisky
Senior Principal Engineer
Field Services Department
Attachments

Table 1 - Corner Coordinates for Blue Creek Wind Project in NAD 83

	Latitude	Longitude
South East	40.732255	-84.271152
South West	40.732255	-85.059386
North West	41.271567	-85.059386
North East	41.271567	-84.271152

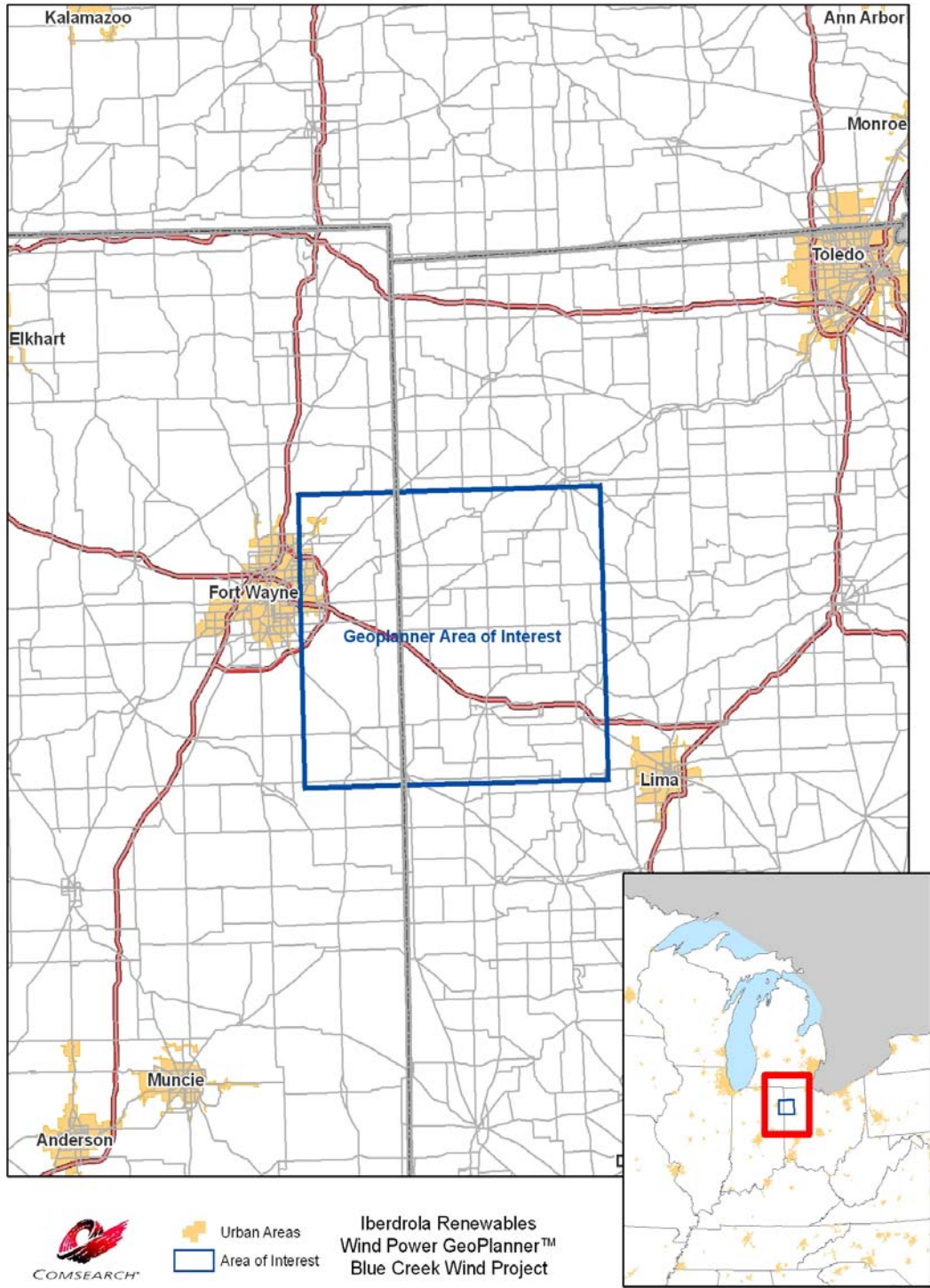
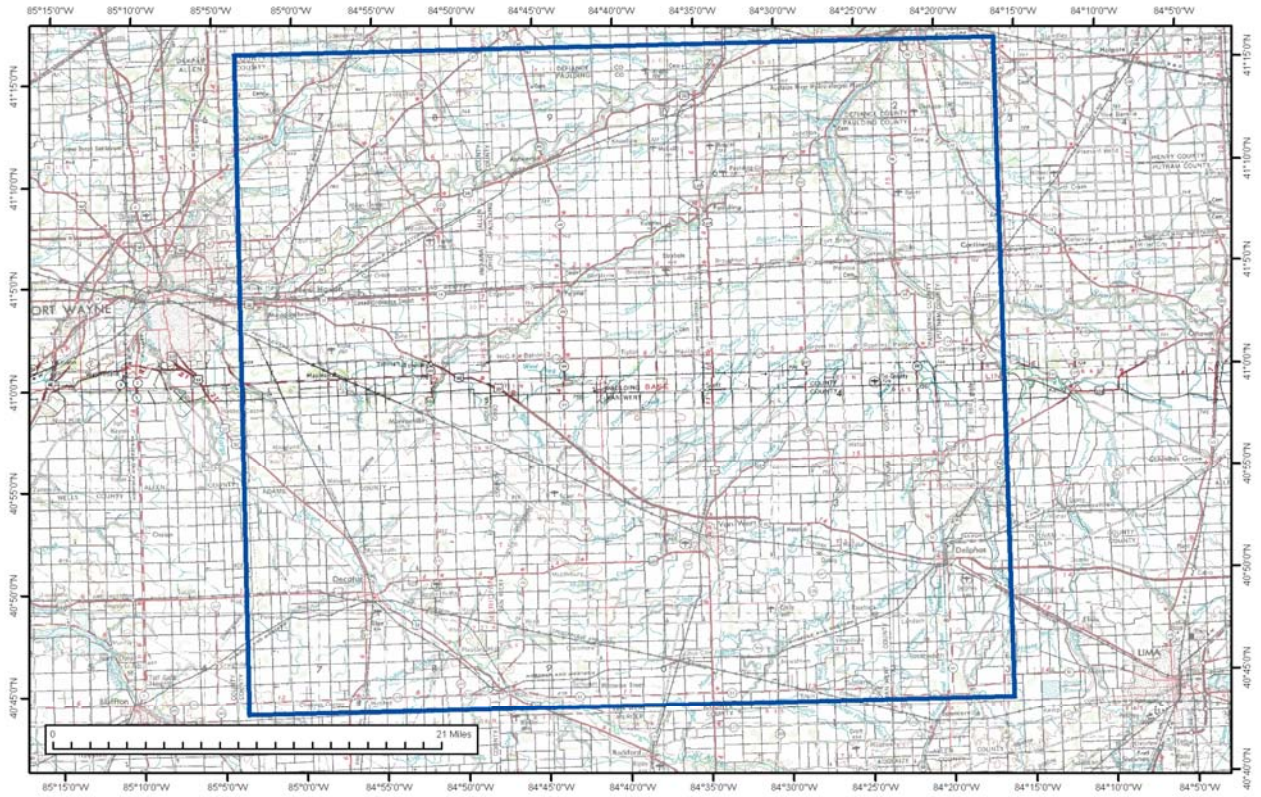


Figure 1: General Area of the Blue Creek Wind Project



 Area of Interest

Iberdrola Renewables
Wind Power GeoPlanner™
Blue Creek Wind Project



Figure 2: Local Area of the Blue Creek Wind Project