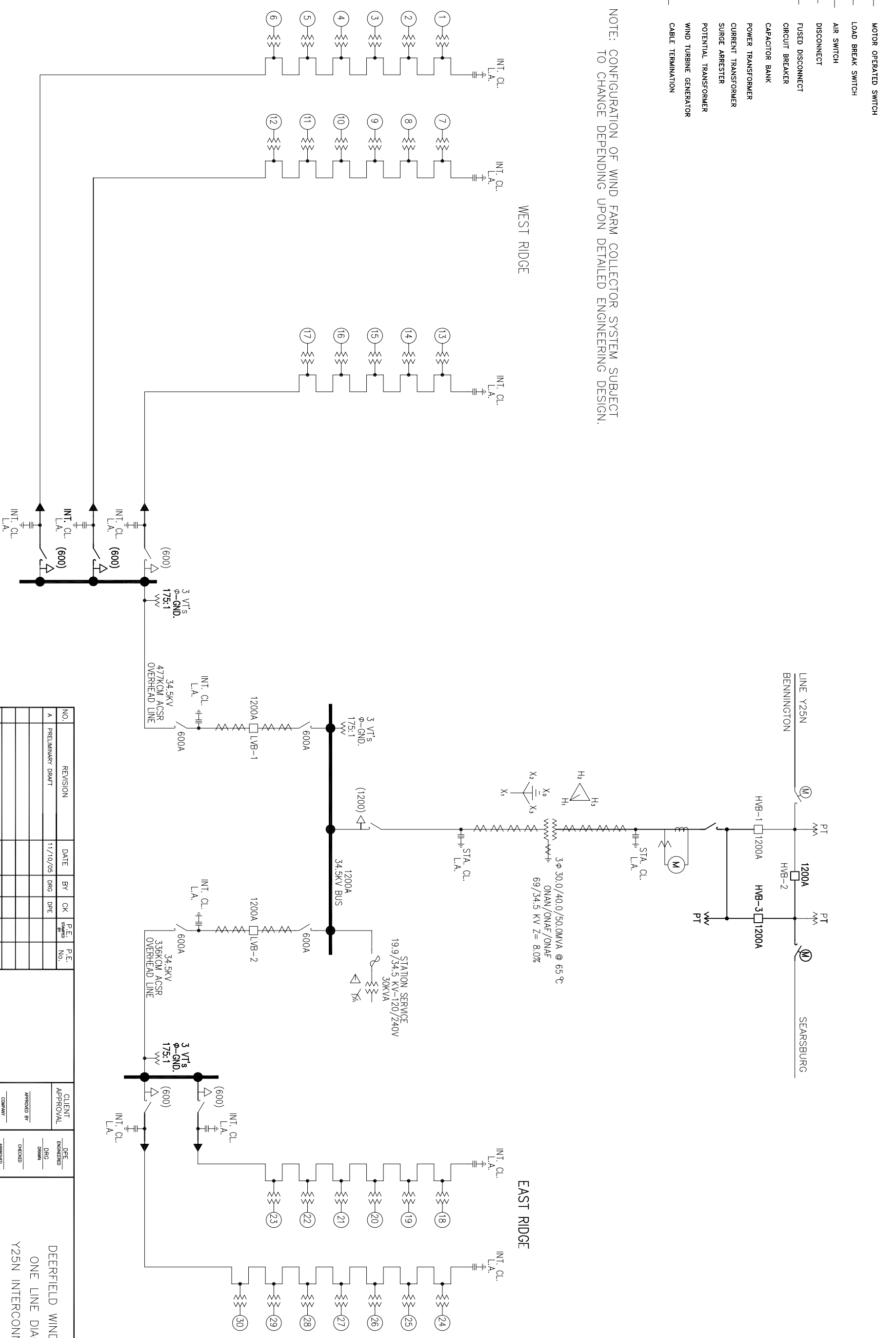


NOTE: CONFIGURATION OF WIND FARM COLLECTOR SYSTEM SUBJECT TO CHANGE DEPENDING UPON DETAILED ENGINEERING DESIGN.



NO.	REVISION	DATE	BY	CK	P.E. No.	P.E. Stamp
A	PRELIMINARY DRAFT	11/10/05	DRG	DPE		

CLIENT APPROVAL	DATE	DPE ENGINEERED	DRG DRAWN	APPROVED BY	DATE	REVIEWED	APPROVED

<b>DEERFIELD WIND FARM</b>	
<b>ONE LINE DIAGRAM</b>	
<b>Y25N INTERCONNECTION</b>	
<b>E-PRO</b>	Engineering & Environmental Consulting, LLC 249 Western Ave, Augusta, Maine 04330 SCALE N.T.S. DATE 11/10/05
11556-E500	REV: A