

PRELIMINARY

NOT TO BE
USED FOR
CONSTRUCTION

REV.	DESCRIPTION	DRN CK'D.	DATE
A	ISSUED FOR COMMENT	JAK	09/20/05
B	NEW OWNER INFORMATION	JAK	07-31-06

PPM ENERGY, INC.
1125 COUCH ST. STE 700
PORTLAND, OR 97208

DRAWING TITLE
SITE PLAN / PROFILE
WEST RIDGE ACCESS

PROJECT DESCRIPTION
DEERFIELD WIND LLC
PRELIMINARY DESIGN

DRAWN BY	JAK
DATE DRAWN	09/20/05
SCALE	1"=100'
AP'D BY	
CAD CODE:	...DING\SRV-1168-001-CS11-11.DWG
GRAPHIC SCALE:	0 100 200
PROJECT NUMBER:	SRV-1168-001
DRAWING NUMBER	CS11
REV.	B

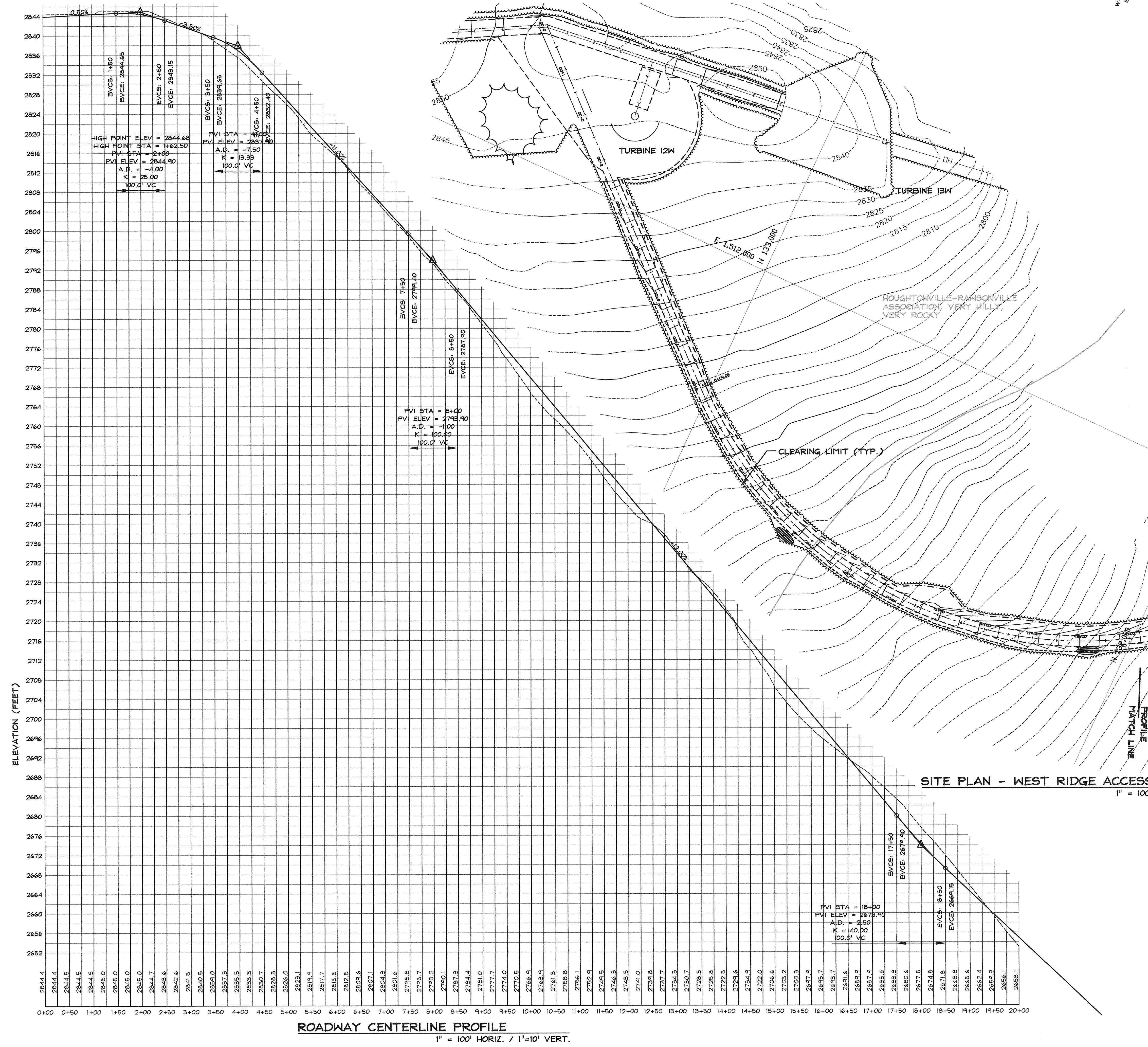
REDUCED
PRINT
NOT TO
SCALE

LEGEND

	APPROXIMATE PROPERTY LINE
	APPROXIMATE EASEMENT LINE
	EDGE OF PAVEMENT
	EDGE OF GRAVEL
	CULVERT
	UNDERGROUND ELECTRIC LINE
	OVERHEAD WIRES
	AERIAL PHOTO TREELINE
	PROP'D TREELINE
	PROP'D TURBINE FOUNDATION
	PROP'D CRANE PAD
	DIVERSION DIKE
	PERIMETER SWALE
	STP
	SOIL UNIT BOUNDARY

GENERAL NOTES:

- TOPOGRAPHIC SURVEY CONDUCTED IN 1993 BY ROBINSON AERIAL SURVEYS.
- COORDINATE SYSTEM: VERMONT STATE PLANE, FEET.
- PROPERTY LINES AND EASEMENT LINES ARE BASED AVAILABLE GIS DATALAYERS OR PLAN SCANS MADE AVAILABLE THROUGH VERA.
- EXISTING UTILITIES ARE SHOWN IN AN APPROXIMATED WAY ONLY AND ALL UTILITIES MAY NOT BE SHOWN. PRIOR TO ANY CONSTRUCTION, THE CONTRACTOR SHOULD CONTACT "DIG-SAFE" AND HAVE ALL UNDERGROUND UTILITIES MARKED ON THE GROUND.
- ROADWAY LAYOUT AND STORMWATER CONTROLS ARE SHOWN IN AN APPROXIMATE FASHION ONLY. FURTHER DESIGN WORK WILL LIKELY MODIFY ROADWAY AND/OR STP SIZING, LOCATION AND TYPE.



ROADWAY CENTERLINE PROFILE
1" = 100' HORIZ. / 1"=10' VERT.