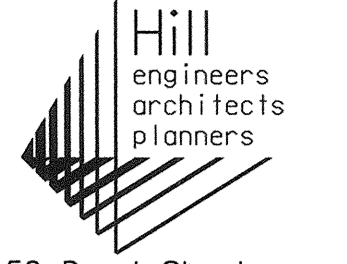
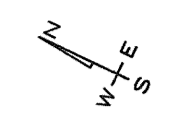


**REDUCED
PRINT
NOT TO
SALE**



50 Depot Street
Dalton, MA 01226
(413) 684-0925

41 Park Street
Adams, MA 01220
(413) 743-0013

www.hillengineers.com

PRELIMINARY

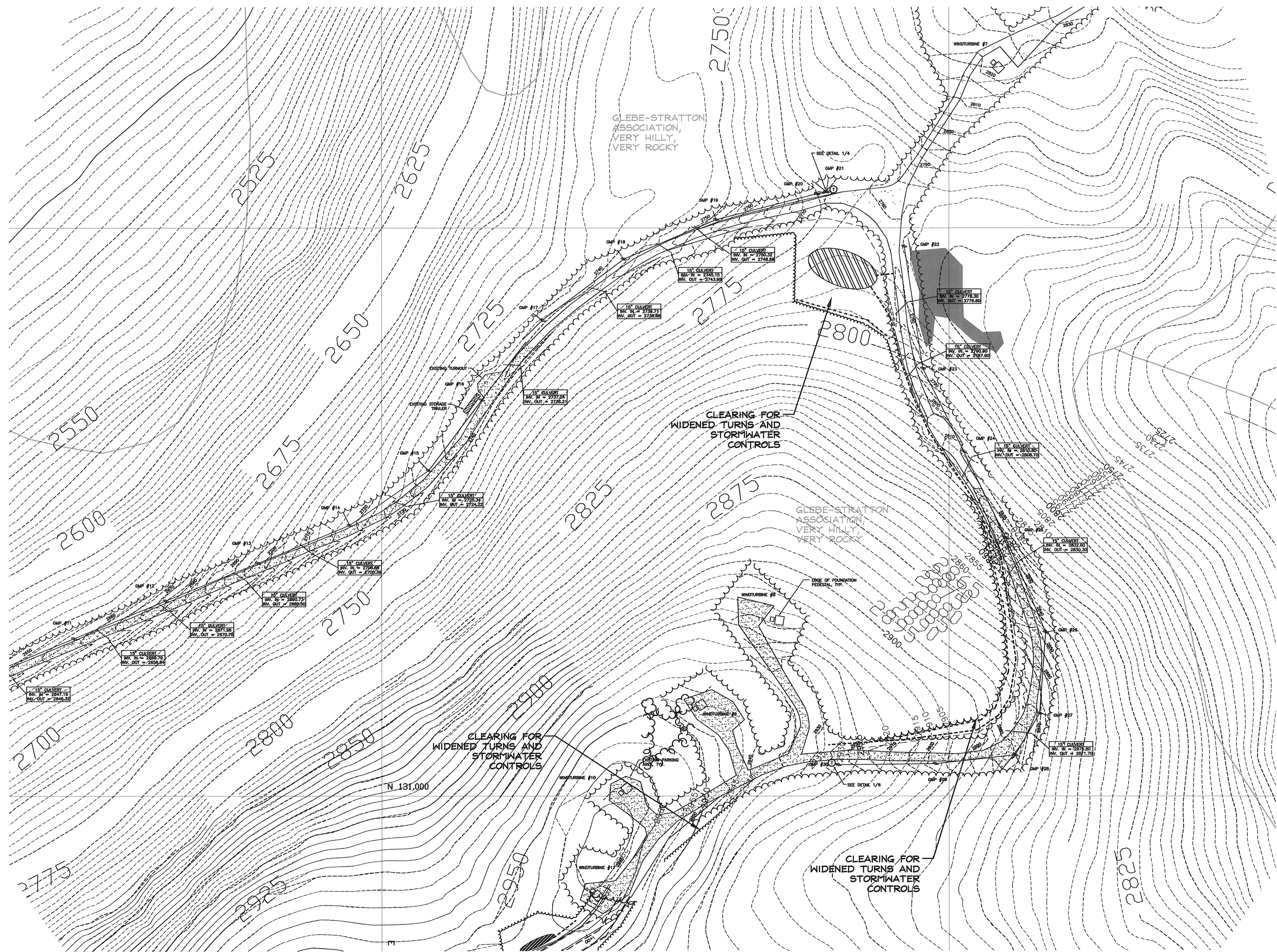
NOT TO BE
USED FOR
CONSTRUCTION

LEGEND

- APPROXIMATE PROPERTY LINE
- APPROXIMATE EASEMENT LINE
- EDGE OF PAVEMENT
- EDGE OF GRAVEL
- CULVERT
- UNDERGROUND ELECTRIC LINE
- OVERHEAD WIRES
- AERIAL PHOTO TREELINE
- PROP'D TREELINE
- PROP'D TURBINE FOUNDATION
- PROP'D CRANE PAD
- DIVERSION DIKE
- PERIMETER SWALE
- STP
- SOIL UNIT BOUNDARY

GENERAL NOTES:

1. TOPOGRAPHIC SURVEY CONDUCTED IN 1993 BY ROBINSON AERIAL SURVEYS.
2. COORDINATE SYSTEM: VERMONT STATE PLANE, FEET.
3. PROPERTY LINES AND EASEMENT LINES ARE BASED AVAILABLE GIS DATALAYERS OR PLAN SCANS MADE AVAILABLE THROUGH VERA.
5. EXISTING UTILITIES ARE SHOWN IN AN APPROXIMATED WAY ONLY AND ALL UTILITIES MAY NOT BE SHOWN. PRIOR TO ANY CONSTRUCTION, THE CONTRACTOR SHOULD CONTACT "DIG-SAFE" AND HAVE ALL UNDERGROUND UTILITIES MARKED ON THE GROUND.
6. ROADWAY LAYOUT AND STORMWATER CONTROLS ARE SHOWN IN AN APPROXIMATE FASHION ONLY. FURTHER DESIGN WORK WILL LIKELY MODIFY ROADWAY AND/OR STP SIZING, LOCATION AND TYPE.



ROADWAY CENTERLINE PROFILE
1" = 100' HORIZ. / 1"=10' VERT.

REV.	DESCRIPTION	DATE
A	ISSUED FOR COMMENT	09/20/05
B	NEW OWNER INFORMATION	07-31-06
C	REVISED ACCESS RD, ADD'L WETLANDS	12-29-06

PPM ENERGY, INC. 1125 COUCH ST. STE 700 PORTLAND, OR 97209	DEERFIELD WIND LLC PRELIMINARY DESIGN
DRAWING TITLE SITE PLAN EAST RIDGE ACCESS EXISTING GMP ROAD	

DRAWN BY	JAK
DATE DRAWN	09/20/05
SCALE	1"=100'
APV'D BY	
CAD CODE:	...DWG\SRV-1166-001-CS115-1.DWG
GRAPHIC SCALE:	0 100 200
PROJECT NUMBER:	SRV-1168-001
DRAWING NUMBER	CS116
REV.	C